



Midwest Note-Book

MIDWEST CHAPTER OF THE MUSIC LIBRARY ASSOCIATION

VOLUME 18 ISSUE 3

JANUARY 2010

IN THIS ISSUE

<u>68th Annual Meeting</u>	
<u>Summary</u>	<u>1</u>
<u>From the Chair</u>	<u>2</u>
<u>Member News</u>	<u>3</u>
<u>Program Sessions</u>	<u>4</u>
<u>Committee Reports</u>	<u>10</u>
<u>Business Meeting</u>	<u>12</u>
<u>Administrative</u>	
<u>Structure</u>	<u>13</u>

CALENDAR

March 20-24, 2010
MLA Annual Meeting
San Diego, California

May 19-22, 2010
44th Annual ARSC
Conference
New Orleans, Louisiana

June 27-July 2, 2010
IAML Annual
Conference
Moscow, Russia

DEADLINE

Submissions for the next issue of *Midwest Note-Book* are due April 1, 2010.

68th Annual Meeting of the MLA Midwest Chapter

Music librarians of all walks

of Midwestern life descended on South Bend, Indiana, for two days of informative and engaging sessions covering many aspects of music librarianship. The chapter's 68th annual meeting was hosted by Jennifer Matthews of the University of Notre Dame. Attendees enjoyed fine accommodations at the Inn at Saint Mary's, while committee meetings and sessions were held at the adjacent Hilton Garden Inn.

At Thursday night's opening reception, Linda Mack and Julia Lindsay of Andrews University gave a lecture-recital exploring the life and works of composer Blythe Owen.



Linda Mack and Julia Lindsay present
Blythe Owen in Michiana

Afterward, attendees entertained themselves with a karaoke machine, a robust track list, hidden talents and encouragement from their peers.

Members of the Public Services Committee covered the ins and outs of LibGuides software during Friday's first session. Lindy Smith, University of Illi-

nois student and recipient of a 2009 Retirees Scholarship, followed with her study on browsability of media collections. UIUC's Kirstin Dougan shared her experiences as a participant in ACRL's Instruction Immersion Program, and Kerri Scannell Baunach of the University of Kentucky finished the day's talks with her recommendations for conducting successful meetings.

On Saturday, Jennifer Matthews publicly unveiled the chapter's new wiki. Stay tuned for some exciting upcoming changes to this helpful tool! Finally, Sheri Stormes of Butler University interviewed retiree Richard LeSueur about his extensive private audio collection and vast knowledge of vocal music.

At the business meeting, chair-elect Paula Hickner officially assumed her role as chapter chair. It was also announced that Keith Cochran will continue in his role as secretary-treasurer. After committee chairs reported on past activities and future goals, attendees happily recognized four recipients of chapter scholarships. Finally, it was announced that the 2010 meeting will be held in Bloomington, Illinois, in late October. See you there!



—Anne Shelley, University of Minnesota



Mark Scharff sings karaoke

Photograph by Rebecca Litman

Photograph by Deb Morris

From the Chair

S'mae from Kentucky, where

basketball frenzy is beginning to take hold once again! Although the Wildcats may be the big news of the season—our daily paper's front page tends to be a second sports section—my favorite activity this time of year is attending the Midwest Chapter meeting. This past October we were treated to a great meeting in South Bend, Indiana, hosted by Jennifer Matthews and the University of Notre Dame. The lively discussions that followed each presentation demonstrated once again that our chapter meetings are one of the best venues for information sharing and continuing education. Special thanks go to our meeting sponsors—Hesburgh Library, Music Library Service Company, and Theodore Front—who kept us filled with tasty treats and coffee.

Congratulations to Keith Cochran, who will be serving a second term as Secretary-Treasurer. We had a great slate of candidates, and I would like to thank Keith and Christine Kubiak for their willingness to serve the chapter in this way. And while we're on the subject, if you haven't renewed your membership yet, I'm sure Keith would be happy to accept your renewal. Wow, all you have to do is click on the following link and the form magically appears: <http://www.mlamidwest.org/documents/Application.pdf>... what could be easier? The renewal form also includes a section for donations. Please consider donating to our two scholarship funds, the Leslie Troutman Scholarship and the Retirees Scholarship. This year we awarded two Troutman scholarships and two Retirees scholarships for travel to Notre Dame! (*See page 3*)

Finally, the chapter will be meeting again in San Diego on Monday, March 22 from 6:00 p.m. to 7:00 p.m. I hope to see many of you there, and I promise there will be no karaoke!

—*Paula Hickner, University of Kentucky*



Midwest Note-Book

The Publication of the Midwest
Chapter of the Music Library
Association

ISSN 1063-5327

VOL. 18, NO. 3

Published in May, September, and
January

Midwest Note-Book is available free of
charge on the Web site of the Midwest
Chapter of the Music Library
Association.

Submissions and communication
regarding *Midwest Note-Book* should
be sent to the editor:

Anne Shelley
University of Minnesota
200 TSB
511 Washington Ave. S.E.
Minneapolis, MN 55455
ashelley@umn.edu

Deadline for submissions is the 1st of
the month preceding publication.

Membership in the Midwest Chapter is
\$12 annually (\$6 for students and
retirees). Inquiries and renewals may
be directed to the Secretary-Treasurer:

Keith Cochran
Cook Music Library
Indiana University
1201 E. 3rd St.
Bloomington, IN 47405-7006
cochran6@indiana.edu

The Midwest Chapter of the Music
Library Association is a tax-exempt,
non-profit organization.

<http://mlamidwest.org>

Member News and Notes

♪ The University of Illinois at Urbana-Champaign has recently acquired a collection of approximately fifty autograph letters of singers connected to the nineteenth-century Parisian operatic stage. Some photographs and press clippings are also included. Several letters are addressed to Jules Massenet. The letters will be transcribed and translated, with some of the more interesting items being digitized sometime in the future. For further information about the collection please contact John Wagstaff, head of the Music and Performing Arts Library at wagstaff@illinois.edu.

(continued on page 9)

Scholarships Awarded

The MLA Midwest Chapter awarded four scholarships to help defray costs associated with attending the 2009 chapter meeting.

Congratulations!

Yi Hong Sim is a recipient of the Retirees Scholarship. She is concurrently pursuing the M.A. in musicology and the M.A. in library and information studies at the University of Wisconsin-Madison. Yi Hong works at Mills Music Library and is interested in public services.

Lindy Smith, a student at the University of Urbana-Champaign, received the Retirees Scholarship. Lindy recently completed her M.S. in library and information science and is now working toward the M.M. in musicology. While at UIUC, Lindy has worked at the Sousa Archives and the Music and Performing Arts Library.

Celeste Schulman received the Troutman Scholarship. As Assistant Circulation Supervisor for Indiana University's Cook Music Library, Celeste's many duties include supervising library student assistants and maintaining the library's audio/visual equipment.

Carla Williams, a recipient of the Troutman Scholarship, is Head of Public Services at Indiana University's Cook Music Library. In addition to her full-time role in the library, Carla is currently pursuing the M.L.S. with a music specialization and a doctoral degree in music.

To learn more about MLA Midwest scholarships, view these pages:
http://mlamidwest.org/documents/Troutman_Scholarship_09.pdf
http://mlamidwest.org/documents/Retirees_Scholarship_09.pdf

New Members

Maria Hertel

Student, University of Illinois at Urbana-Champaign

Nicole Long

Student, University of Illinois at Urbana-Champaign

Celeste Schulman

Assistant Circulation Supervisor, Indiana University

Yi Hong Sim

Student, University of Wisconsin-Madison

Lindy Smith

Student, University of Illinois at Urbana-Champaign

Membership Renewal

Renew your membership now!

It's not too late to renew your membership! Annual dues are only \$12 for regular members and \$6 for students and retirees. The membership year runs from October 1, 2009 to September 30, 2010.

To join or renew, visit the Midwest Chapter Web site at <http://mlamidwest.org>. Click on 'Membership Info' for a membership form. Send your completed form with a check payable to Midwest Chapter, MLA to:

Keith Cochran, Secretary-Treasurer
Cook Music Library
Indiana University
1201 E. 3rd St.
Bloomington, IN 47405-7006

Sessions of the 68th Annual Chapter Meeting

Friday, October 9, 2009

Notre Dame Parlor A/B—Hilton Garden Inn

Best Practices for Creating LibGuides

Public Services Committee

Kirstin Dougan (University of Illinois at Urbana-Champaign) began the session with a description of LibGuides, a product designed to facilitate the presentation and sharing of library research guides on the Web. LibGuides are available from Springshare, at <http://springshare.com/>. There are many benefits to LibGuides, including that it is customizable for each institution, guides and portions thereof are easily copied between users at an institution, content boxes are modular for simple re-use of individual components, and usage of the guides is easily measurable. Dougan shared examples of UIUC guides for music and the performing arts, which are divided into class pages

such as term definitions – in guides aimed at undergraduates.

Rebecca Littman (University of Wisconsin-Milwaukee) shared information about embedding content from external programs and/or services in LibGuides. To illustrate, she showed examples of a number of applications that had been embedded on UWM sites and were now available in guides; these applications included Meebo widgets, Twitter feeds, and YouTube videos. Littman also included examples of embedding pre-formed catalog searches or images of book jackets.

Sheri Stormes and Scott Pfitzinger (Butler University) presented two sides of the technology divide in their overview of Butler's implementation of LibGuides. While Sheri admitted to never having had enough time to master codes like HTML, Scott has long been a friend of technology, so both presenters were able to comment on their use of the product from two very different perspectives.



Photograph by Rebecca Littman

Attendees were treated to two days of informative talks

and research topic pages. When composing guides, she recommended against including as much text as one would in a comparable print resource and to be sure to provide sufficient background information –

Sheri explained how LibGuides had replaced Butler's former research guide system, which involved one librarian updating all online pathfinders and which focused heavily on print pathfinders. This system re-

Sessions of the 68th Annual Chapter Meeting, *continued from page 4*

sulted in out-of-date guides both in print and online. Librarians at Butler learned LibGuides easily, thanks to Scott's instructions (http://libguides.butler.edu/getting_started) and they now post and update their own content in a timely fashion. Some aspects of all guides at Butler are regulated to be sure that terminology and information literacy concepts are clear throughout all disciplines, but individual editors still have the freedom to customize each guide fairly extensively so that it reflects the topic and draws attention to particular ideas.

Scott went on to describe some of the back-end and implementation aspects of the product. He pointed out that Web 2.0 tenets are one of the great strengths of LibGuides because users are able to interact with librarians seamlessly on a number of platforms. The relatively low cost of the product and the eager responsiveness of Springshare to customer requests for modifications and enhancements make LibGuides an attractive product. Additionally, Springshare releases regular developments, such as the recently launched CampusGuides product that gives the entire campus community an opportunity to create guides that are not centered around libraries and library practices. Finally, Scott touted LibGuides' ease-of-use, noting that some of Butler's most technologically-cautious librarians have turned out to be some of the most prolific LibGuides editors. The content of Sheri and Scott's presentation is available in a LibGuide: <http://libguides.butler.edu/mla>.

Following the presentations, audience members shared some of their favorite LibGuides uses, including creating guides to list sources of copyright-free images and guides to highlight local music events. Many members spoke of their positive experiences with this product and noted that it maximizes librarians' time and resources while providing a simple and usable tool for patrons. (*Susannah Cleveland, Bowling Green State University*)

Muhammad and the Mountain: Issues of Access in Browseable Media Collections

Lindy Smith, University of Illinois at Urbana-Champaign

The second Friday morning session was given by Lindy Smith, a graduate student at the University of Illinois at Urbana-Champaign, on her research of the browsability of media collections in libraries. Lindy began the presentation by discussing current technological trends in libraries, such as the fact that more patrons are using online resources for their research needs and feel that, compared to Google, the library is difficult to use. Patrons sacrifice reliability for speed, believing that the library is slow in comparison to search engines. Lindy made a correlation to Muhammad with a quote from *The Essays of Francis Bacon*, which includes "If the hill will not come to Mahomet, Mahomet will go to the hill." This quote brought up an interesting question: should the library adjust its methods of access to match changes in methods of retrieval, or should an attempt be made to educate users on library protocol?

After an explanation of the need to address this issue, Lindy provided her findings through a case study of two public libraries. She compared the accessibility of these two browsable compact disc collections—including the physical layout and organization—in an attempt to explore possible solutions to users' changing needs and modes of access. Lindy's analysis included methods of displaying the materials, labeling and classification systems, access points, geographical distinctions, and the time it took to find music on a particular subject.



Photograph by Rebecca Litman

Lindy Smith talks about the importance of media browsability

Sessions of the 68th Annual Chapter Meeting, *continued from page 5*

Lindy concluded that libraries can change their image and encourage accessibility to media by allowing patrons to self-serve and by helping them to increase their library literacy. Her final statement was, “if the patrons will not come to the library, the library must go to its patrons.” (*Liz Berndt Morris, Central Michigan University*)

ACRL’s Instruction Immersion Program

Kirstin Dougan, University of Illinois at Urbana-Champaign

In the third session of the day, Kirstin Dougan, Music User Services Coordinator at the University of Illinois Urbana-Champaign, shared with us the take-home points from her participation in the 2008 ACRL Immersion Program for instruction librarians. The ACRL Institute for Information Literacy offers this intensive, four-and-a-half-day program annually. Taught by nationally-recognized librarians, the 2008 program focused on the current transition from bibliographic instruction to information literacy.

The Immersion Program emphasized two practical approaches to teaching information literacy: adhering to an instructional design cycle and prioritizing the assessment of learning outcomes. Dougan presented the instructional design cycle as five questions: (1) What do you want the student to be able to do? (2) What does the student need to know in order to do this well? (3) What activity will facilitate this learning? (4) How will the student demonstrate this learning? (5) How will I know the student has done well? With such focused learning, it becomes possible to create measurable learning outcomes that are clear to the students, the course instructor and the librarian. Such outcomes are also more likely to be level-appropriate and to stress transferable knowledge.

As a result of this program, Dougan now designs her instruction sessions “backward from outcomes, not forward from content.” Dougan’s concise PowerPoint

slides included helpful conceptual diagrams (those closet Maslowian-self-actualization-pyramid fans amongst you should run—not walk—towards Jerilyn Veldof’s “Filtering Content” diagram from *Creating the One-Shot Library Workshop*), as well as a brief bibliography of useful online and print resources for teaching information literacy.



Dougan reflected on the program’s truly immersive qualities. She appreciated the scenario-based learning, which required program attendees to give presentations and receive feedback, as well as the chance to find out what colleagues were doing at other institutions. At the end of the program, each participant had to write a sentence encapsulating what they had learned. Dougan shared hers with us: “Measure what is valued; don’t just value what is measured.” (*Yi Hong Sim, University of Wisconsin-Madison*)

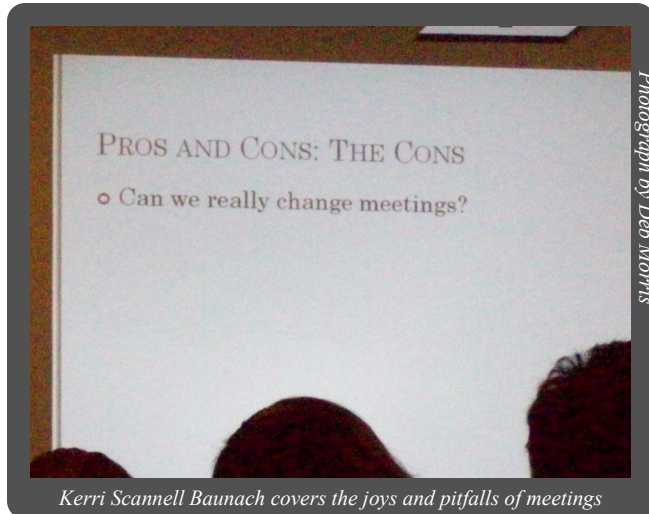
The Joy of Meeting

Kerri Scannell Baunach, University of Kentucky

Following a brief introduction, Baunach’s presentation began with a skit that portrayed a less-than-successful meeting. This served as a catalyst for outlining meeting pitfalls, specifically disorganization and the fact that meeting organizers often try to fit too many things

Sessions of the 68th Annual Chapter Meeting, *continued from page 6*

into one session. Meetings can also fall into ruts, thereby becoming boring and something to be avoided. Baunach pointed out that we are not taught how to run meetings, so we rarely see good meetings in action.



Kerri Scannell Baunach covers the joys and pitfalls of meetings

On the contrary, there are many benefits to having meetings. They provide opportunities for live interaction with colleagues, with input and discussion happening in real time. Updates can be given on various projects and planning for new services can be done. Meetings can be a time to discover others' thoughts, concerns, and perspectives. Advice and ideas can be exchanged, collaboration can be encouraged, and problems can be presented and addressed before they escalate.

Baunach related meeting expectations to concert expectations. For example, we have different expectations when we go to a concert in Symphony Hall than we do when we go to a concert in the park. Our meeting expectations are also based on context, so meetings should be planned according to need and purpose.

Baunach outlined four types of meetings: daily check-in, weekly tactical, monthly strategic/ad-hoc strategic, and off-site quarterly. Daily check-in meetings can take roughly five minutes, with each participant taking 30 to 60 seconds to state his or her priorities for the

day. Weekly tactical meetings begin with a lightning round (similar to the daily check-in meeting) and a review of the organization's key metrics. Based on this review and the topics collected from the lightning round, a tactical agenda is decided, and potential strategic topics are set aside for future meetings. Discussion and decisions complete the meeting, which generally lasts between 45 and 60 minutes. Monthly strategic meetings, which might last from two to four hours, have a predetermined agenda of no more than two or three topics and often require participants to do research and planning ahead of time. Off-site quarterly meetings happen away from the office, last one or two days, and are a time to review direction. The four meeting types can be adjusted according to the needs of an organization, as exemplified by adaptations made by Baunach for her unit.

In conclusion, Baunach stated the need for more research in this area, as there is a small amount of literature pertaining to meeting management in a library setting. (*Carla Williams, Indiana University*)

Saturday, October 10, 2009

Notre Dame Parlor A/B—Hilton Garden Inn

The MLA-Midwest Chapter Wiki

Jennifer Matthews, University of Notre Dame

The Midwest Chapter of the Music Library Association now has its own wiki, a website which allows its users to join forces in the creation, organization, and modification of its content. Jennifer Matthews, Music Librarian at the University of Notre Dame and current manager of the MLA-MW Wiki, started the session with a brief history of the wiki and how it came into being. The wiki was created as a means for committee members to share information in an environment outside of regular meetings. The dynamic nature of the wiki—which can be edited by multiple parties as op-

Sessions of the 68th Annual Chapter Meeting, *continued from page 7*

posed to a blog format, in which posts cannot be changed—makes it the ideal tool for committee work. All committee members' contributions are integrated on the wiki, which makes collaboration amongst members easy. Each chapter committee has its own wiki page through which members can share information and ideas. The address for the wiki can be found through the links page on the [chapter Web site](#); members who want access to the wiki should contact Jennifer Matthews to obtain a user name and password.



Jennifer Matthews showcases the official MLA Midwest Wiki

Robert Fox, Senior Systems Administrator at the University of Notre Dame, spoke about the direction the wiki will be heading in the coming months. Through the use of software called Confluence, the nature of posting to and updating wiki pages will change to a “what you see is what you get” (WYSIWYG) interface. This interface will allow for direct editing on the pages rather than through HTML coding, so designs and layouts can be easily customized to users' specifications. Users will also be able to create and use templates for customized page appearances. This interface should be available in Spring 2010, so stay tuned for more details! (*Celeste Schulman, Indiana University*)

An Encore Performance: Richard LeSueur Oral History Interview, Part Two

Richard LeSueur, Ann Arbor District Library, retired
Sheri Stormes, Butler University


In an extension of the oral history interview begun last year in Kansas City, Richard LeSueur again took the microphone, this time with Sheri Stormes as the interviewer. The conversation started with a discussion of memorable past MLA meetings. LeSueur shared memories of a meeting in Santa Barbara in the 1970s and one in New Orleans that coincided with Mardi Gras, as well as performances that took place at meetings in New York and Philadelphia. In addition to performances at meetings, LeSueur recounted his and Jack Knapp's yearly pilgrimages to the Ohio Light Opera, where they attend numerous shows, often multiple times. LeSueur has influenced the repertoires of many important singers—including Jessye Norman, Renee Fleming, and Cecilia Bartoli—by directing them toward music especially suited for their voices that was perhaps previously unfamiliar to them. He has also played a role in shaping the musical experiences of countless University of Michigan music students.



Sheri Stormes interviews retiree Richard LeSueur

The next area discussed was LeSueur's personal collection of recordings, which he estimated to include 90 linear feet of scores, 9,500 commercial CDs, 5,000

Sessions of the 68th Annual Chapter Meeting, *continued from page 8*

LPs, 5,814 pirated CDs, 4,000 open reel tapes, and 2,500 cassettes. This amount has probably grown in the months since the interview, as he is always visiting record stores and trading with collectors the around the world. LeSueur has made arrangements so that his collection will be maintained in the foreseeable future; the University of Michigan Library has accepted the collection and will provide off-site storage with listening facilities. The recordings will be arranged according to LeSueur's original cataloging scheme. As one might expect, LeSueur is spending his retirement working with his collection, transferring tapes to digital formats, attending many concerts, and generally enjoying Ann Arbor. (*Lindy Smith, University of Illinois at Urbana-Champaign*) 

Member News, *continued from page 3*

♪ Dr. H. Owen Reed, who taught at Michigan State University from 1939 to 1976 and established his archives in the mid-1980s, has donated extensive additional material to the Michigan State University Music Manuscript Collection.

This material from Reed's lengthy career provides an important view of the work of a twentieth century composer and professor. The music manuscript collection has also received new materials from composers Jere Hutcheson and James Niblock, and from choreographer Forrest Coggan. Preliminary finding aids for these and other collections may be found at <http://www2.lib.msu.edu/branches/fal/musicmancoll.jsp>.

♪ The University of Iowa Libraries is pleased to announce the release of the Ignaz Pleyel Early Editions Digital Collection, which is located at <http://digital.lib.uiowa.edu/pleyel>. This collection of over 250 early printed and manuscript scores represents in

entirety the Rita Benton Music Library's holdings of the work of French composer and music publisher Ignaz Pleyel (1757-1831). It consists primarily of keyboard and chamber music, including arrangements of large orchestral works. The physical collection was assembled by the late Dr. Rita Benton, noted Pleyel scholar and former Head of the Music Library at the University of Iowa. The Music Library was named in her honor in 1980.

♪ Misti Shaw (DePauw University) is now Editor, *MLA Newsletter*.

Committee Reports

Cataloging

The Cataloging Committee met on Thursday, October 8, 2009 at 1:30 p.m. at the Hilton Garden Inn. Eight members attended.

Items discussed at the meeting include WorldCat Local, specifically how it's being presented at individual libraries and both positive and negative aspects for music users. For music libraries with uncataloged titles whose holdings symbol hasn't been added to records in the OCLC database, a search in WorldCat Local may not result in a true representation of the holdings in its collection. There was brief discussion about OCLC's Expert Community Experiment whose six-month duration ended on August 15th. OCLC has deemed the experiment a success. The functionality that was implemented for the experiment remains available for cataloging members' continued use. Mark Scharff gave an update on developments with RDA (Resource Description and Access). As of June, the entire text has been finalized. Institutions representing both MLA and OLAC (Online Audio-Visual Catalogers) have joined together as one participant for purposes of the upcoming testing period for RDA. In the list of participating institutions we noted that, for music, the Midwest Chapter is well-represented by the University of Iowa (Grace Fitzgerald) and the University of Minnesota (Mary Huisman) during the six-month training and testing period. Mark also reported on several changes that will specifically affect music cataloging, as well as a list of "unresolved issues" about which comments are still being accepted. Kerri Scannell Baunach distributed a list of proposed changes to MARC 21 that will affect music authority and bibliographic records. The committee discussed new codes to be added to the list for Form of Composition in bibliographic records; a proposal was also considered for defining additional subfields for MARC tag 518 and enhancement of the 033 field for place and date of capture. Patty Falk presented an update on the work of the BCC's Subcommittee on Subject Access. As part of the music genre/form project, LC is compiling two lists: music genre/form terms and terminology for medium of performance. Anyone is free to submit suggestions for either list.

The committee members discussed the possibility of sponsoring a program at next year's chapter meeting, perhaps jointly with the Public Services Committee. Suggestions included an information session on RDA—depending, of

course, on the progress made during this coming year, a presentation on music genre/form terms, and cloud computing: how patrons use it and the effect it may have on how we, as catalogers, do our work. (*Sue Stancu, Indiana University*)

Membership

On Thursday, October 8, 2009, the committee met together with the Publications committee to discuss the first four items on our joint agenda. Five members of Membership, four members of Publications, and four guests were present.

The combined committees discussed changes to the chapter membership brochure, using the chapter wiki to communicate between chapter meetings, having a contest to design a logo for our chapter, and we recognized Anne Shelley's exemplary work as editor of the *Midwest Note-Book*.

After the joint meeting concluded, members of the Membership Committee discussed last year's committee report, outreach activities within the last year, continuing our library school liaison program, and ideas for attracting new members. Some ideas discussed include promoting membership to those on our chapter listserv who don't maintain a chapter membership, promoting membership to library paraprofessionals, sponsoring a session for open paper submissions at future chapter meetings, an option for single day registration at future meetings, and promoting the chapter to interns and public library employees. (*Michael Duffy, Northern Illinois University*)

Public Services

Four returning members, three new members, and three guests of the Public Services Committee discussed two potential projects for the coming year.

First, the committee will create a directory of existing LibGuides and other subject guides in music and the performing arts at Midwest chapter libraries. The committee will also compile a list of best practice sites or documents that can be used by music and performing arts librarians when creating LibGuides and guides in other formats. The directory and supporting documents list will be hosted on the

Committee Reports, *continued from page 10*

MWMLA Web site or wiki.

The committee will also undertake a survey of the chapter membership in an attempt to address issues of changing service models and to identify new methods of service and content delivery in the 21st century. Data collected from the survey will be used by the group of MLA members reviewing the document *Core Competencies and Music Librarians*. A small group will create the survey and send it to the larger committee for feedback. The survey will be distributed to the chapter membership in time to have responses tabulated for the 2010 MLA Annual Meeting. (Kirstin Dougan, University of Illinois at Urbana-Champaign)

Publications


After the joint meeting with the Membership Committee concluded, chair Lynne Weber reconvened the Publications Committee with four members and two guests. The committee discussed the need to select a new chair but no name has been brought forward so the chair-elect position remains unfilled. Lynne was elected chair in 2006 and, according to the By-Laws, the term of committee chair is four years, the fourth year being service as past chair. There was brief discussion of the recent Midwest Chapter interviews that have been featured in *Midwest Note-Book*, followed by a detailed description of the committee's primary project—a print publication of chapter interviews in celebration of the chapter's 70th anniversary. Lynne will approach the chapter chair for a grant to cover the cost of compact discs, tape, transcriptions, and various other expenses associated with this publication. In conclusion, there was a review of the state of the interviews previously undertaken and consideration of names of members and former members who are yet to be interviewed. The meeting adjourned at 4:45 p.m. (Lynne Weber, Minnesota State University, Mankato)

Technology, Archives, Preservation and Sound (TAPS)

The TAPS (Technology, Archives, Preservation, and Sound) Committee held its annual meeting during the MLA Midwest Meeting in South Bend, Indiana on October 8, 2009. During the business portion of the meeting, members

discussed changes to the committee's Web site, which will be completed by January 1, 2010. In addition, members viewed the Google Apps streaming video function, and discussed it as a possibility for delivering bibliographic instructional videos. Members participating in the videos initiative agreed to circulate video scripts by the end of December 2009 and create videos for upload in January. Committee members also discussed the possibility of approaching MLA's new Emerging Technologies and Services Committee to sponsor a future MLA conference session.

Emma Dederick was chosen as our new chair-elect, to serve through 2012. Misti Shaw will finish up outstanding TAPS initiatives as outgoing chair through October 2010.

At the conclusion of the business meeting, TAPS members Susannah Cleveland, Emma Dederick, and Misti Shaw, along with guest Lindy Smith, toured the Audio/Visual section of the Notre Dame Archives. The informative tour was led by Assistant Archives Director Charles Lamb and an in-depth explanation of the audio/visual equipment and collections was given by Audio/Visual Archivist Erik Dix. The tour concluded with a lively discussion of media-related archives issues. (Misti Shaw, DePauw University) 



Minutes of the Business Meeting

Saturday, October 10, 2009 · Notre Dame Parlor A/B—Hilton Garden Inn · South Bend, Indiana

I. Call to Order

The meeting was called to order at 8:30 a.m. by Paula Hickner.

II. Approval of the 2008 Meeting Minutes

The minutes of the 2008 meeting were printed in the January 2009 issue of *Midwest Note-Book* (vol. 17 no. 3). A motion was made and seconded to approve the 2008 minutes. The motion passed.

III. Treasurer's Report

Since last year's meeting, the Associated Bank account managed by A-R Editions has been closed and those funds have been transferred to the Old National checking account. As of October 1, 2009, chapter assets totaled \$4786.45. The current total for the Retirees' Fund is \$1,361.89 and the total for the Troutman Fund is \$1,934.88. A motion was made and seconded to accept the Treasurer's report. The motion passed.

IV. Election Results

Keith Cochran was re-elected to the position of Secretary-Treasurer. A total of 120 ballots were mailed. Thanks to Keith and Christine Kubiak for their willingness to serve the Chapter by running for this office!

V. Committee Reports

- Cataloging Committee: Sue Stancu reported on the positive and negative reactions of the committee to WorldCat Local as well as the OCLC Expert Community Experiment. She also gave an update on RDA. The text has been finalized, and Midwest Chapter members Grace Fitzgerald (University of Iowa) and Mary Huisman (University of Minnesota) will be participating in the testing of RDA.
- Membership Committee: Michael Duffy reported that the committee discussed changes to the MLA Midwest Chapter brochure and the possibility of creating a wiki. The committee is also planning to sponsor a contest to create a new logo for the chapter. Outreach activities from the past year and ideas for promoting chapter membership were also discussed.
- Public Services Committee: Kirstin Dougan reported that the committee will be creating a directory of LibGuides within the Midwest Chapter. They also plan to survey members of the chapter about core competencies for music librarians.
- Publications Committee: Lynne Weber reported that elections will be held for a new Chair. Anne Shelley has digitized back issues of the Chapter newsletter starting from 1992 and these will be posted on the chapter's Web site in the near future. Also, the publications committee will request a Chapter Grant to assist in the transcription of interviews conducted for the Oral History project. To date, 23 interviews have been completed. Therese Dickman gave additional information about the Oral History project. She is looking for members to assist with editing and transcribing the interviews. She also stressed the importance of interviewing both newer and older members of the chapter.
- TAPS Committee: Misti Shaw reported that a link to the new TAPS website will be provided in the near future. She also requested information about projects of interest to TAPS. The committee also discussed creating a site for archiving videos and archival management. The new Chair-elect is Emma Dederick.
- Bylaws Committee: Beth Christensen reported that no changes are needed for the Chapter's Bylaws.

VI. Scholarship Awards

Four scholarships were awarded this year. Carla Williams and Celeste Schulman (both from Indiana University) were awarded the Troutman Scholarship; Yi Hong Sim (University of Wisconsin-Madison) and Lindy Smith (University of Illinois, Urbana-Champaign) were awarded the Retirees' Scholarship. Congratulations!

VII. Old Business

There was no old business to discuss.

VIII. New Business

There was no new business to discuss.

IX. Announcements

Next year's chapter meeting will be held in Bloomington, Illinois, Oct. 21-23, 2010 and will be hosted by Illinois Wesleyan University.

X. Adjournment

The meeting was adjourned at 9:30 a.m.

Respectfully submitted,
—Keith Cochran, Secretary-Treasurer

Midwest Chapter of the Music Library Association: Administrative Structure

EXECUTIVE COMMITTEE

Chair: Paula Hickner (University of Kentucky), 2010
Past Chair: Laura Gayle Green (University of Missouri-Kansas City), 2010
Secretary-Treasurer: Keith Cochran (Indiana University), 2010
Newsletter Editor: Anne Shelley (University of Minnesota), 2010
Web Editor: Abbey Thompson (SELCO), 2010

STANDING COMMITTEES

Bylaws *(One-year terms; members may be reappointed)*

Beth Christiansen (St. Olaf College), Chair
Grace Fitzgerald (University of Iowa)
Laura Gayle Green (University of Missouri-Kansas City)

Membership *(Three-year terms; members may be reappointed;*

Chair serves year as Chair-Elect, two years as Chair, one year as Past-Chair)

Michael J. Duffy (Northern Illinois University), 2010, Chair
Keith Cochran (Indiana University), 2011
Paula Hickner (University of Kentucky), 2010
Richard LeSueur (Ann Arbor District Library, retired), 2010
Sheridan Stormes (Butler University), 2011
Lynne Weber (Minnesota State University, Mankato), 2011

Program *(One-year terms; members may be reappointed)*

Paula Hickner (University of Kentucky), Chair
Robert Delvin (Illinois Wesleyan University)

Publications *(Three-year terms; members may be reappointed;*

Chair serves one year as Chair-Elect, two years as Chair, one year as Past-Chair)

Lynne Weber (Minnesota State University, Mankato), 2010, Chair
Therese Dickman (Southern Illinois University-Edwardsville), 2012
Michael J. Duffy (Northern Illinois University), 2010
Greg Fitzgerald (Western Michigan University), 2011
Laura Gayle Green (University of Missouri-Kansas City), 2012
Kathleen Haefliger (Chicago State University), 2010
Mary Huismann (University of Minnesota), 2012
Ruth Inman (Kennedy-King College), 2012
Jennifer Matthews (University of Notre Dame), 2011
Amy Pennington (Saint Louis University), 2012
Anne Shelley (University of Minnesota), 2012
Wendy Sistrunk (University of Missouri-Kansas City), 2011
Abbey Thompson (SELCO), 2012

SPECIAL COMMITTEES

Cataloging *(Three-year terms; members may be reappointed; Chair serves one year as Chair-Elect, two years as Chair, one year as Past-Chair)*

Sue Stancu (Indiana University), 2010, Chair
Kerri Baunach (University of Kentucky), 2012
Patty Falk (Bowling Green State University), 2011
Grace Fitzgerald (University of Iowa), 2012
Mary Huismann (University of Minnesota), 2011
Jennifer Matthews (University of Notre Dame), 2011
Deborah Morris (Roosevelt University), 2012
Ralph Papakhian (Indiana University), 2012
Sandy Rodriguez (University of Missouri-Kansas City), 2011
Mark Scharff (Washington University), 2010
Wendy Sistrunk (University of Missouri-Kansas City), 2011
Abbey Thompson (SELCO), 2011

Public Services *(Three-year terms; members may be*

reappointed; Chair serves one year as Chair-Elect, two years as Chair, one year as Past-Chair)

Kirstin Dougan (University of Illinois at Urbana-Champaign), 2011, Chair
Tom Caw (University of Wisconsin-Madison), 2012
Robert Delvin (Illinois Wesleyan University), 2011
Jill King (DePaul University), 2012
Christine Kubiak (Illinois State University), 2011
Rebecca Littman (University of Wisconsin-Milwaukee), 2011
Liz Berndt Morris (Central Michigan University), 2012
Sheridan Stormes (Butler University), 2011

Technology, Archives, Preservation, and Sound (T.A.P.S.)

(Three-year terms; members may be reappointed; Chair serves one year as Chair-Elect, two years as Chair, one year as Past-Chair)

Emma Dederick (Indiana University), 2010, Chair
Misti Shaw (DePauw University), 2009, Past-Chair
Susannah Cleveland (Bowling Green State University), 2012
Jeff Gibbens, 2010
Kathleen Haefliger (Chicago State University), 2010
Anne Shelley (University of Minnesota), 2011

Terms expire in October of the year indicated.

This version of the administrative structure should reflect changes made at the 2009 chapter meeting. Please report errors and omissions to the editor.

